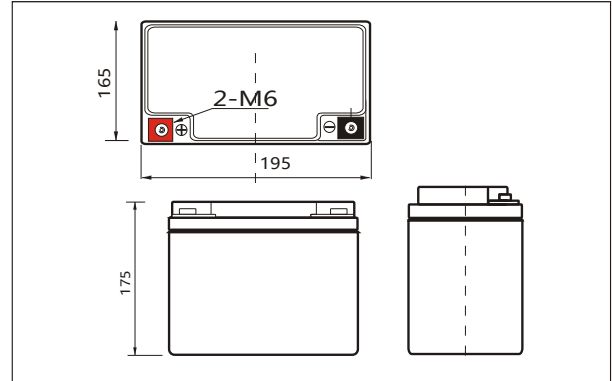


Lithium Iron Phosphate (LiFePO4) Battery Specification

SLAUMXLI42-12(12.8V42AH)



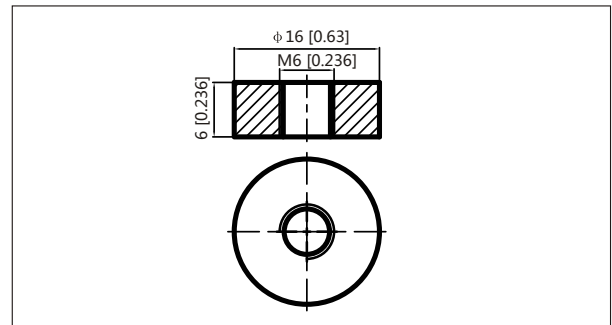
Outer dimensions (mm)



Specifications

Nominal Voltage	12.8V	
Rated capacity (20 hour rate)	42Ah	
Dimensions	Total Height	175 mm
	Height	175 mm
	Length	195 mm
	Width	165 mm
Weight Approx	5.5 Kg	
Terminal	M6	

Terminal Type (mm)



Characteristics

Capacity Retention	>80% at 28 days	
Cycle Life	>80% at 2000 Cycles	
1.5 hour discharge to 10.5V	3.00 A	
Internal Resistance	<20 mΩ	
Charge Characteristics	Charge Voltage	14.6±0.1V
	Charger Current	<40A
Discharge Characteristics	Max Continuous Current	50A
	Min Discharge Cut-off Voltage	10V
Temperature	Charge Temperature	0°C-45°C(32°F-113°F)
	Discharge Temperature	-20°C-60°C(-4°F-140°F)
	Storage Temperature	0°C-40°C(32°F-104°F)

Discharge Curves 25°C(77 °F)

